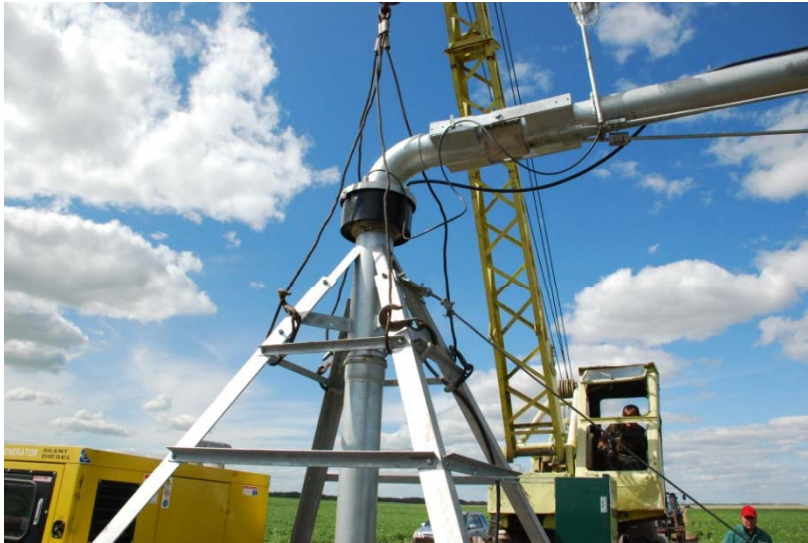


Towable Center Pivot











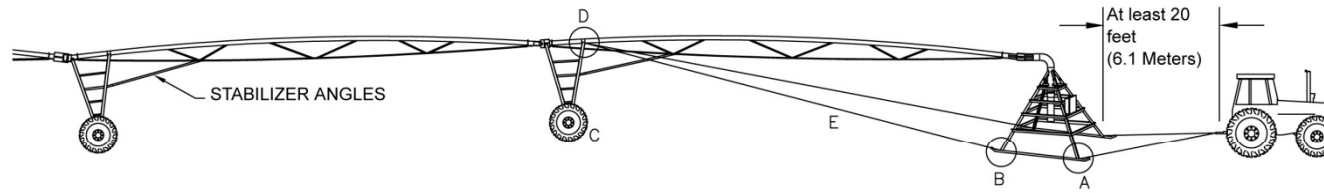












---END TOW DETAILS ---

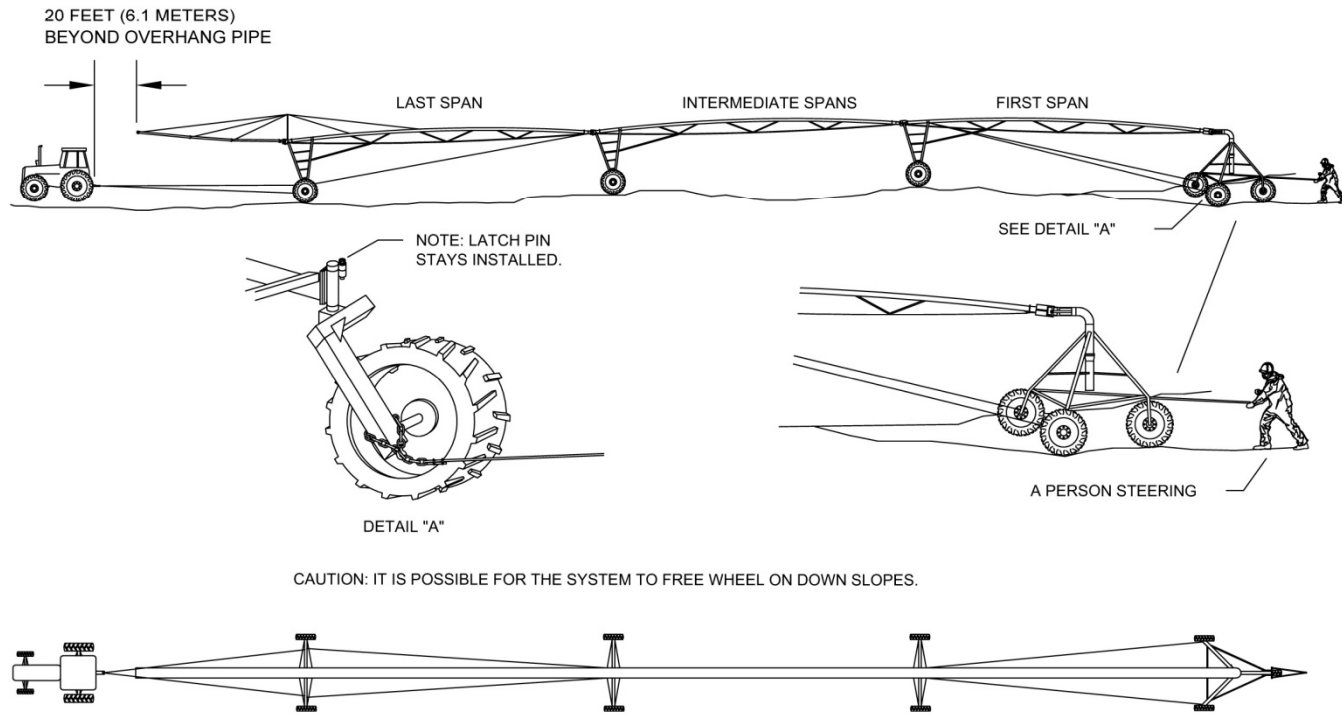
<p>TOW TRACTOR HOOK-UP. USE EITHER 1/2" (12.7 MM) CHAIN OR 1/2" (12.7 MM) CABLE.</p> <p>TOW</p> <p>DETAIL "A"</p>	<p>ADJUST CHAIN AS TIGHT AS POSSIBLE. SEE INSTRUCTIONS ON PRECEDING PAGE.</p> <p>DETAIL "B"</p>	<p>1/2" (12.7 MM) PIN</p> <p>1/2" (12.7 MM) PIN</p> <p>DETAIL "C"</p>
<p>HOOK HERE</p> <p>DETAIL "D"</p>	<p>PULL BACKWARD AT LEAST 10" (254 MM) BEFORE TOWING.</p> <p>10" (254 MM)</p> <p>DETAIL "E"</p>	<p>DETAIL "F"</p>

(01-03)

Center Pivot Operation Manual

5-5

Towing Procedure



Section 5 - Towing Procedure